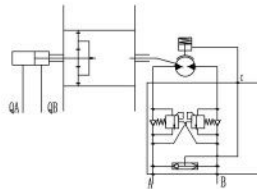
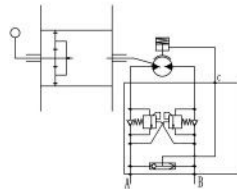
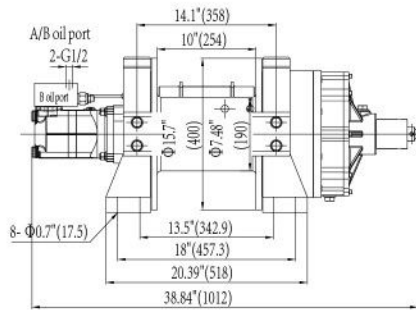
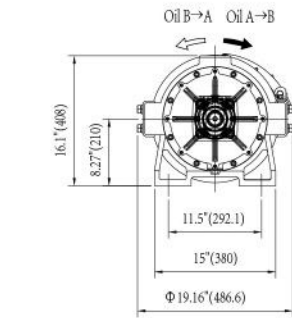
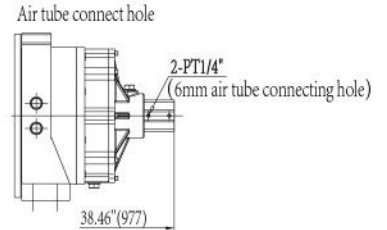


HEN35000 - 30000



PNEUMATIC CLUTCH

Air pressure range (bar)	1~8
Ventilation volume (L/min)	1



SPECIFICATION

Model	First layer line pull		First layer line speed		Working pressure diff.		Oil flow supply	Gear ratio
	lbs	kg	fpm	mpm	psi	MPa	l/min	
HEN35000	35000	15876	15.1	4.6	2175	15	70	30.39:1
HEN30000	30000	13608	15.1	4.6	1740	12	70	30.39:1

Model	Wire rope dia.		Layer	Wire rope capacity		Valve model
	inch	mm		ft	m	
HEN35000	Φ3/4"	Φ18	4	170.6'	52	NF-120P1Y1S1-003 NF-120P2Y2S1-003
HEN30000	Φ3/4"	Φ18	4	170.6'	52	NF-120P1Y1S1-003 NF-120P2Y2S1-003

PERFORMANCE

Model	Layer of cable	HEN35000					
		Rated line pull per layer		Line speed		Wire rope capacity per layer	
		lbs	kg	fpm	mpm	ft	m
	1	35000	15876	15.1	4.6	31.8'	9.7
	2	29836	13533	17.4	5.3	68.6'	20.9
	3	26000	11793	20.0	6.1	110.3'	33.6
	4	23038	10450	22.6	6.9	156.9'	47.8
	5	20682	9381	25.3	7.7	170.6'	52

Model	Layer of cable	HEN30000					
		Rated line pull per layer		Line speed		Wire rope capacity per layer	
		lbs	kg	fpm	mpm	ft	m
	1	30000	13608	15.1	4.6	31.8'	9.7
	2	25966	11778	17.4	5.3	68.6'	20.9
	3	22889	10382	19.7	6.0	110.3'	33.6
	4	20464	9282	22.0	6.7	156.9'	47.8
	5	18503	8393	24.3	7.4	170.6'	52

NET WEIGHT(WITHOUT WIRE ROPE)

Model	Weight	
	lbs	kg
HEN35000	573	260
HEN30000	573	260

VALVE OPTIONS

Model	HEN35000/30000
Valve	NF-120 P2 Y2 S1-003
	NF-120 P1 Y1 S1-003

WARNING:

1. The winch will never be used for hoisting people or hoisting objects above people.
2. Do not use clutch under load.
3. Do not equip winch into oil supply system which without relief valve.

NOTE:

1. Recommended oil flow supply range is 35-90 l/min.
2. Dual balance valves as standard, winch must be used in Independent oil supply system which with relief valve.