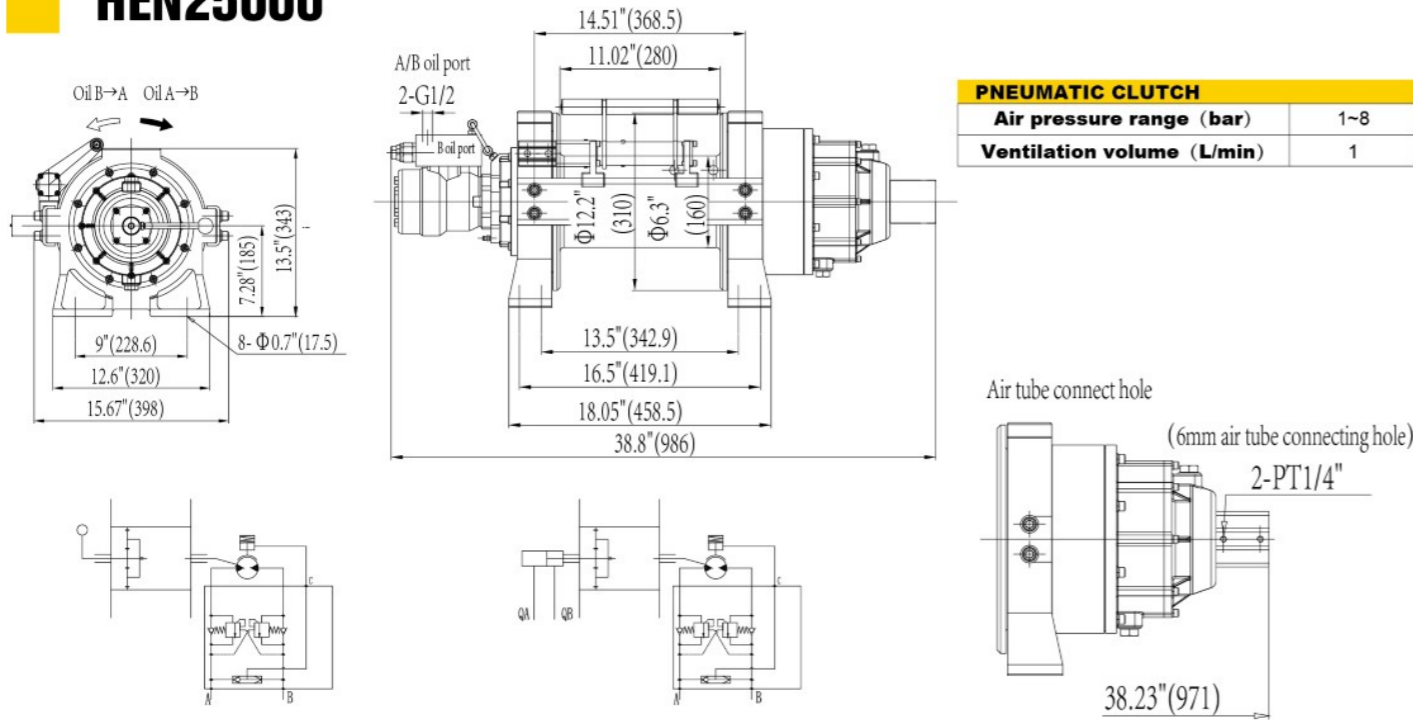


HEN25000



SPECIFICATION

Model	First layer line pull		First layer line speed		Working pressure diff.		Oil flow supply	Gear ratio
	lbs	kg	fpm	mpm	psi	MPa	l/min	
HEN25000	25000	11340	18	5.5	2175	17.5	75	20:1

Model	Wire rope dia.		Layer	Wire rope capacity		Valve model
	inch	mm		ft	m	
HEN25000	Φ5/8"	Φ16	4	131'	40	NF-120P1Y1S1-003 NF-120P2Y2S1-003

PERFORMANCE

Model	Layer of cable	HEN25000					
		Rated line pull per layer		Line speed		Wire rope capacity per layer	
		lbs	kg	fpm	mpm	ft	m
	1	25000	11340	18	5.5	28.9'	8.8
	2	21153	9595	21.3	6.5	63.3'	19.3
	3	18333	8316	24.6	7.5	102.7'	31.3
	4	16176	7337	27.8	8.5	131'	40

DIMENSIONS AND NET WEIGHT(WITHOUT WIRE ROPE)

Model	Weight	
	lbs	kg
HEN25000	358	162.5

VALVE OPTIONS

Model	HEN25000
Valve	NF-120 P2 Y2 S1-003 NF-120 P1 Y1 S1-003

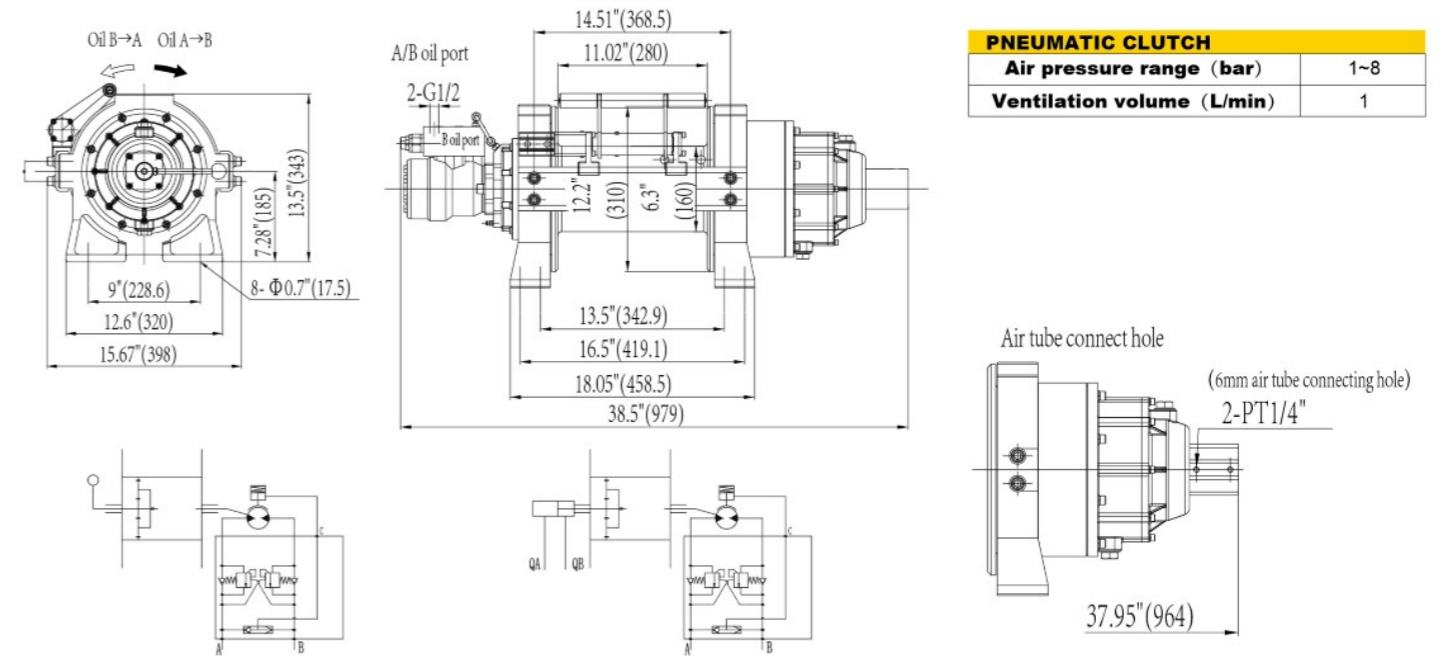
WARNING:

- The winch will never be used for hoisting people or hoisting objects above people.
- Do not use clutch under load.
- Do not equip winch into oil supply system which without relief valve.

NOTE:

- Recommended oil flow supply range is 35-75 l/min.
- Dual balance valves as standard, winch must be used in Independent oil supply system which with relief valve.

HEN20000



SPECIFICATION

Model	First layer line pull		First layer line speed		Working pressure diff.		Oil flow supply	Gear ratio
	lbs	kg	fpm	mpm	psi	MPa	l/min	
HEN20000	20000	9072	20.6	6.3	1740	16	75	20:1

Model	Wire rope dia.		Layer	Wire rope capacity		Valve model
	inch	mm		ft	m	
HEN20000	Φ35/64"	Φ14	4	203.4'	62	NF-120P1Y1S1-003 NF-120P2Y2S1-003

PERFORMANCE

Model	Layer of cable	HEN20000					
		Rated line pull per layer		Line speed		Wire rope capacity per layer	
		lbs	kg	fpm	mpm	ft	m
	1	20000	9072	20.6	6.3	34.1'	10.4
	2	17228	7814	23.9	7.3	73.5'	22.4
	3	15130	6863	27.2	8.3	118.4'	36.1
	4	13488	6118	30.5	9.3	169'	51.5
	5	12168	5519	33.7	10.3	203'	62

DIMENSIONS AND NET WEIGHT(WITHOUT WIRE ROPE)

Model	Weight	
	lbs	kg
HEN20000	357	162

VALVE OPTIONS

Model	HEN20000
Valve	NF-120 P2 Y2 S1-003 NF-120 P1 Y1 S1-003

WARNING:

- The winch will never be used for hoisting people or hoisting objects above people.
- Do not use clutch under load.
- Do not equip winch into oil supply system which without relief valve.

NOTE:

- Recommended oil flow supply range is 35-75 l/min.
- Dual balance valves as standard, winch must be used in Independent oil supply system which with relief valve.