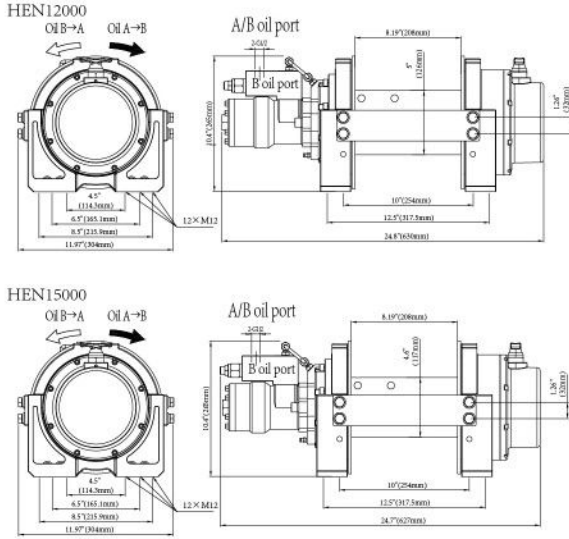
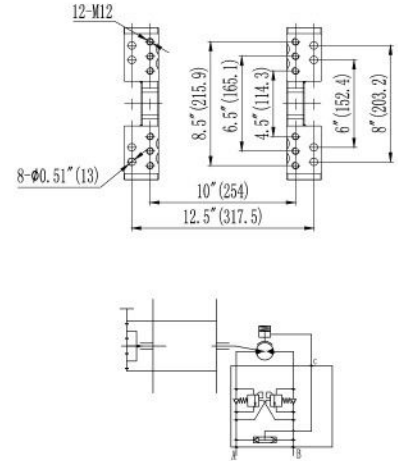


HEN15000 - 12000



PNEUMATIC CLUTCH

Air pressure range (bar)	1~8
Ventilation volume (L/min)	1



SPECIFICATION

Model	First layer line pull		First layer line speed		Working pressure diff.		Oil flow supply	Gear ratio
	lbs	kg	fpm	mpm	psi	MPa	l/min	
HEN15000	15000	6810	18	5.5	2175	15	60	17.3:1
HEN12000	12000	5448	19.7	6	2320	14	60	17.3:1

Model	Wire rope dia.		Layer	Wire rope capacity		Valve model
	inch	mm		ft	m	
HEN15000	Φ1/2"	Φ13	4	98.4'	30	NF-060 P2 Y2 S1-001
HEN12000	Φ15/32"	Φ12	4	98.4'	30	NF-060 P2 Y2 S1-001

PERFORMANCE

Model	Layer of cable	HEN15000					
		Rated line pull per layer		Line speed		Wire rope capacity per layer	
		lbs	kg	fpm	mpm	ft	m
	1	15000	6810	18	5.5	23'	7
	2	12636	5732	21.3	6.5	48.6'	14.8
	3	10916	4952	24.9	7.6	76.1'	23.2
	4	9608	4358	28.2	8.6	98.4'	30

Model	Layer of cable	HEN12000					
		Rated line pull per layer		Line speed		Wire rope capacity per layer	
		lbs	kg	fpm	mpm	ft	m
	1	12000	5448	19.7	6	23.3'	7.1
	2	10118	4589	23.3	7.1	48.9'	14.9
	3	8746	3967	26.9	8.2	76.8'	23.4
	4	7701	3493	30.5	9.3	98.4'	30

DIMENSIONS AND NET WEIGHT(WITHOUT WIRE ROPE)

Model	Weight	
	lbs	kg
HEN15000	161	73
HEN12000	150	68

VALVE OPTIONS

Model	HEN12000/15000
Valve	NF-120 P2 Y2 S1-001

WARNING:

1. The winch will never be used for hoisting people or hoisting objects above people.
2. Do not use clutch under load.
3. Do not equip winch into oil supply system which without relief valve.

NOTE:

1. Recommended oil flow supply range is 35-60 l/min.
2. Dual balance valves as standard, winch must be used in Independent oil supply system which with relief valve.